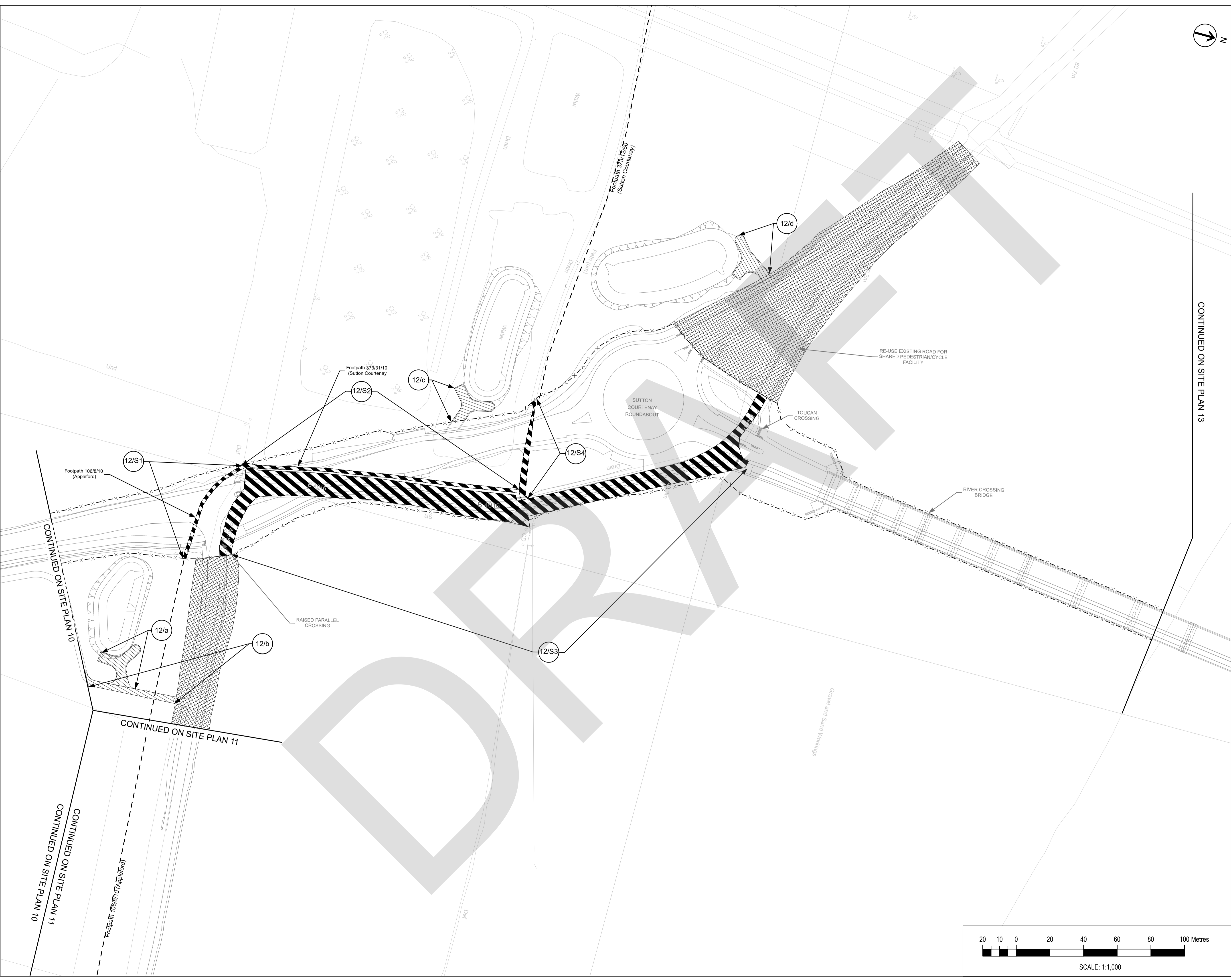


- NOTES:**
This Site Plan does not show widths or constructional details
- Borough/Parish Boundary
 - Public Right of Way
- KEY:**
- Highway Boundary
 - Classified Roads
 - Highway to be stopped up
 - Highway to be improved
 - New Highway
 - Private Means of Access to be stopped up
 - New Means of Access



| Rev | Description | dd/mm/yy | By | Check | Approved |
|-----|-------------|----------|----|-------|----------|
| | | | | | |

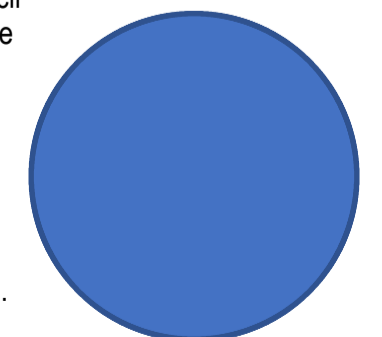
This map is reproduced from Ordnance Survey material with the permission of Ordnance Survey on behalf of the Controller of Her Majesty's Stationery Office. © Crown Copyright. Unauthorised reproduction infringes Crown Copyright and may lead to prosecution or civil proceedings. Oxfordshire County Council, 0100023343, 2021



THE OXFORDSHIRE COUNTY COUNCIL (DIDCOT GARDEN TOWN HIGHWAYS INFRASTRUCTURE – A4130 IMPROVEMENT (MILTON GATE TO COLLETT ROUNDABOUT), A4197 DIDCOT TO CULHAM LINK ROAD, AND A415 CLIFTON HAMPDEN BYPASS) (SIDE ROADS) ORDER 2022

SITE PLAN 12 -
A4197 DIDCOT LINK ROAD – SOUTH OF B4016 TO SUTTON COURTNEY ROUNDABOUT TO RIVER THAMES CROSSING APPROACH

The COMMON SEAL of Oxfordshire County Council was hereunto affixed in the presence of –



Authorised Officer
Dated this day of 202 Seal No.

| Drawn | Checked | Approved | Date |
|-------|---------|----------|----------|
| AH | ** | ** | 06/07/22 |

| GH Project Number | Scale at A1 |
|-------------------|-------------|
| 132861.001 | 1:1,000 |

| Drawing Number | Revision |
|---------------------|----------|
| GH-132861001-SRO-12 | P01.4 |

